

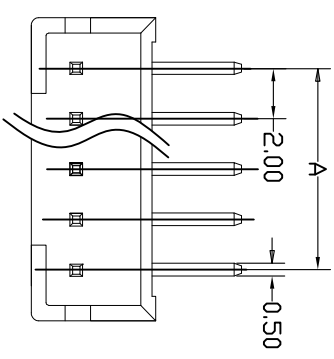
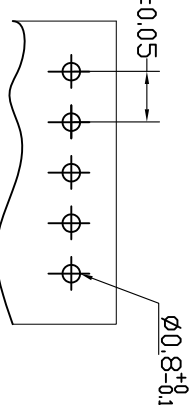
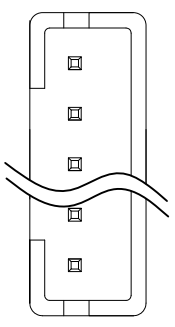
記號	設置內容	日期	修改	核准
△				

CW203S-XX

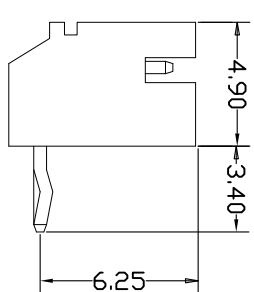
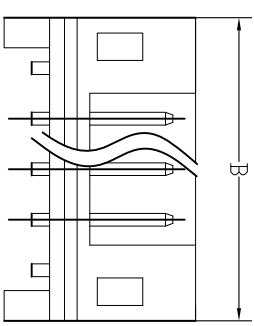
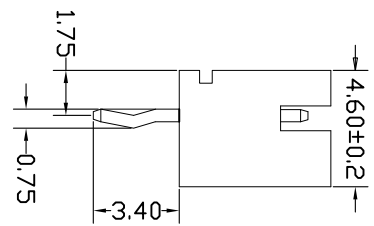
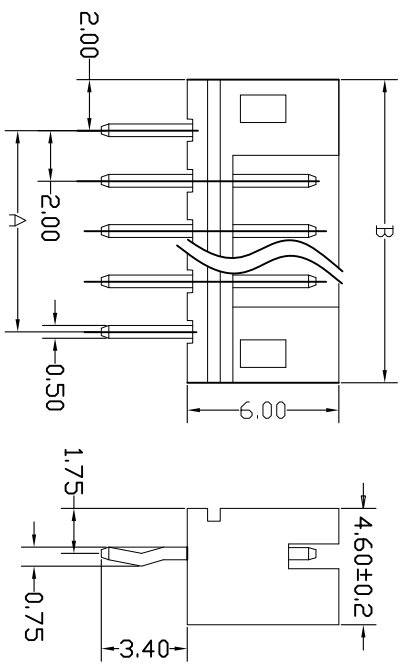
straight Angle

CW203R-XX

Right Angle



CIRCUITS	PART NLT.	A	B
2	CW203X-02	2.00	8.0
3	CW203X-03	4.00	8.0
4	CW203X-04	6.00	8.0
5	CW203X-05	8.00	1.20
6	CW203X-06	10.00	1.40
7	CW203X-07	12.00	15.00
8	CW203X-08	14.00	18.0
9	CW203X-09	16.00	20.0
10	CW203X-10	18.00	22.0
11	CW203X-11	20.00	24.0
12	CW203X-12	22.00	26.0
13	CW203X-13	24.00	28.0
14	CW203X-14	26.00	30.0
15	CW203X-15	28.00	32.0
16	CW203X-16	30.00	34.0
17	CW203X-17	32.00	36.0
18	CW203X-18	34.00	38.0
19	CW203X-19	36.00	40.0
20	CW203X-20	38.00	42.0



.100"(2.54mm) pitch single row headers

CW203 Series

Poles: 2-20

Material:insulator:NYLON UL 94V-2

Comoxr:0.50mm(.20")square pin,brass, tin plated

Mates with CH203 series housing

Specifications

Current rating:2A AC,DC

Voitage rating:250V AC,DC

Temperature range:-25~85°C

Insulation resistance:1,000 AC/minute

Applicable PC board thickness:.063"(1.6mm)

承永實業有限公司
BLUE SOURCES ELECTRONICS CO.,LTD.

UNLESS OTHERWISE SPECIFIED	TOLERANCES ARE	繪圖 / 日期	單位	Title / Part NLT.	CW203 系列
.x	±0.30	Draw By/Date	MM		Wafer 2.0 DIP
.xx	±0.20	審核 / 日期	比例		顏色
.xxx	±0.10	Check By/Date	Scale		Material
.xxx°	±3.0°	批准 / 日期	頁次		角法
.xxx°	±2.0°	App. By/Date	SHEET		PRDL
.xxx°	±1.0°		1/1		版本
					REV.
					00